





Stearn Way, Buntingford, SG9 9GH

**** CHAIN FREE **** Westwood Leber are delighted to bring to the market this immaculately presented three bedroom detached family home on this newly built development in Buntingford. This property offers extremely spacious living accommodation throughout comprising of a large open kitchen/dining room with patio doors leading to a low maintenance rear garden with seated decking area. Further benefits include an en-suite to the well sized master bedroom, a three piece family bathroom, a downstairs w/c and off-street parking to the front. An early viewing is highly recommended!



WESTWOODLEBER

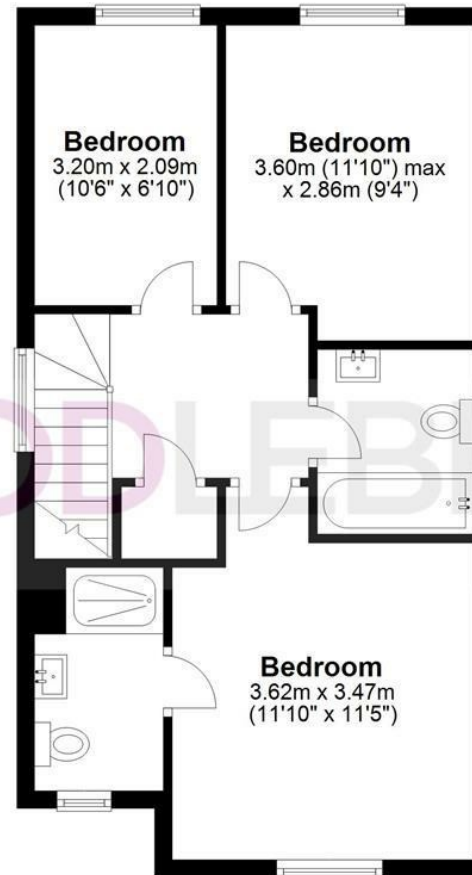
Ground Floor

Approx. 46.1 sq. metres (495.9 sq. feet)



First Floor

Approx. 46.8 sq. metres (503.8 sq. feet)



Total area: approx. 92.9 sq. metres (999.6 sq. feet)

FOR ILLUSTRATIVE PURPOSES ONLY. NOT TO SCALE. Whilst every attempt had been made to ensure the accuracy of the floor plan shown, all measurements, positioning, fixtures, features, fittings and any other data shown are an approximate interpretation for illustrative purposes only and are not to scale. No responsibility is taken for any error, omission, miss-statement or use of data shown. Property marketing provided by Westwood Leber. Plan produced using PlanUp.









 WESTWOODLEBER

 WESTWOODLEBER
LET US GUIDE YOU HOME

